



## **45Litre septic tank disposal pump unit,**

### **Installation Instructions**

Thank you for purchasing a Technipump 45L tank and pump unit. These units are designed for the pumped discharge of treated waste water from the final chamber of the septic tank. This is to pump the water into a disposal system such as a sparge pipe system.

#### **Unpacking**

Remove the lid of the tank as the pump is packed within the 45L plastic tank in a cardboard carton, with packers which need to be removed. When unpacking please check for possible damage caused in transit.

#### **General assembly**

We refer you to the sectional drawings overleaf so that you can see how the pump is to be assembled within the tank.

The tank and lid is not designed to take the weight of vehicular traffic, so do not install in driveways or vehicle parking places. When digging a hole to install the tank in ground, we recommend a minimum of 50mm of wet concrete be placed in the bottom of the hole and the tank nestled into that, in order to anchor it in place. If the tank is located in a position that will mean that it will be regularly walked on, we recommend surrounding the top of the tank with concrete as well.

#### **Outlet connection**

The outlet is a 1" BSP-fm screwed socket, normally located on left hand side when facing the higher inlet connection.

#### **Inlet Connections**

Inlet connection is a 110mm i.d. socket, and a NZ std. 100mm NB pvc pipe will slide inside the socket for a tight fit. However due to the grade of plastic it cannot be glued in place, and we recommend a bead of silicone sealant be applied around the inside of the socket.

There is a secondary inlet connection on the other side of the tank, which is 50mm lower, and that is supplied blanked off unless requested otherwise.

#### **Cable Installation.**

Supplied fitted in the tank is a 50mm DWV waste water pipe socket set. This fitting is to provide connection for a 50mm vent pipe, as the tank needs venting as levels can change suddenly within the tank, such as when a toilet is flushed or when the pump switches on.

The vent pipe is required also to act as a conduit for the pump power cable, as any cable installed in-ground requires installation in a conduit. A 50mm DWV pipe will pass a 3-pin plug, and this enables installation without cutting the power cable, and so this eliminates the need for an electrician.

**Tip:** if you ever withdraw the pump from the tank and need to remove the cable, tie a piece of string to the plug so that you can pull it back through later.

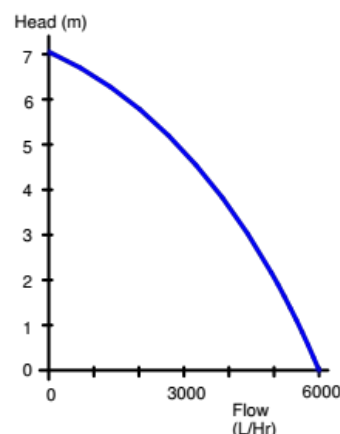
When installing, draw excess cable out through the vent pipe as much as possible, rather than let it coil up inside the tank.

**>> Never lift the pump by the cable, as that will damage the pump.**  
**Always lift using the handle on top of the pump.**

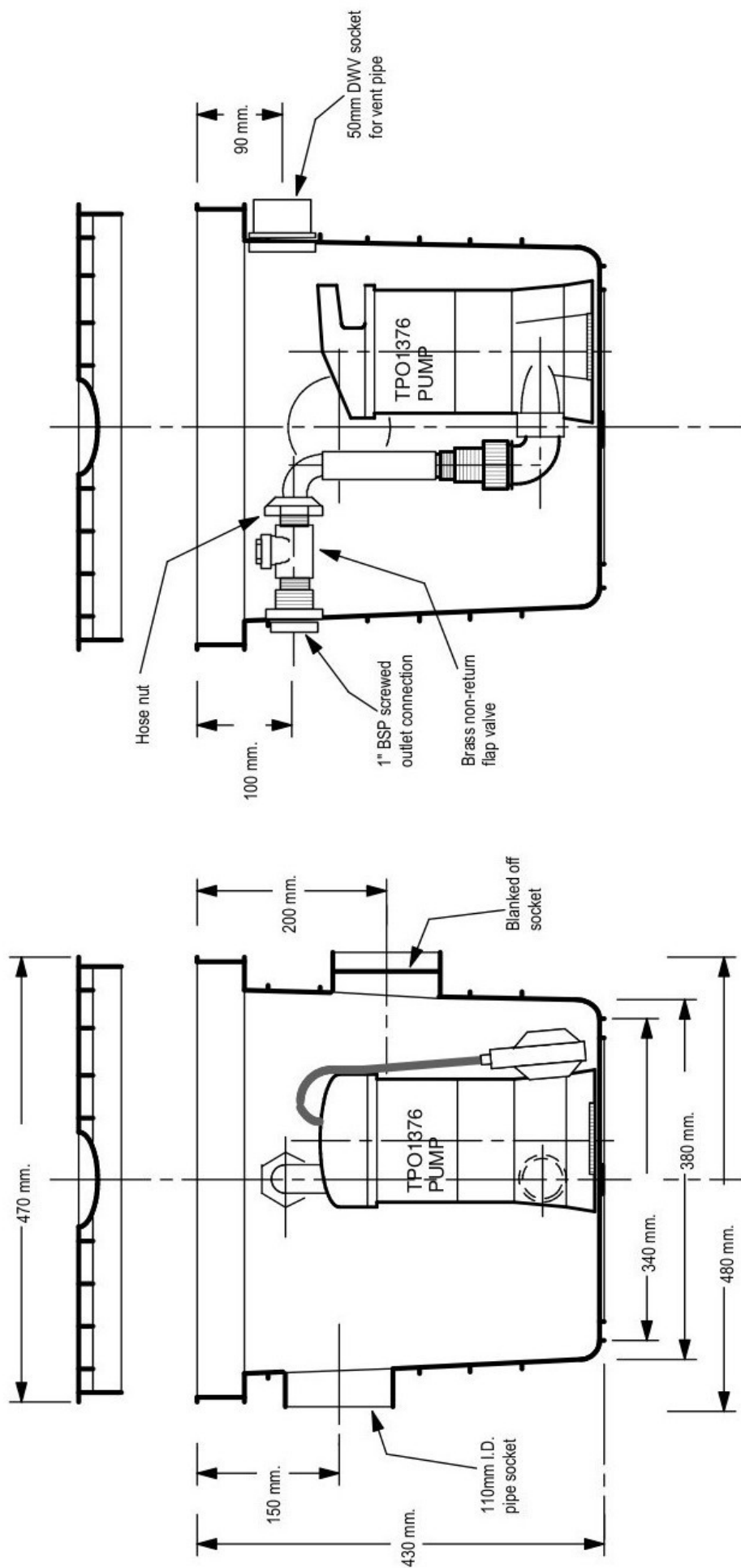
#### **Pump**

The pump fitted is a model TPO1376 submersible drainage pump, with a 400watt, 230volt single phase electric motor, and with 10m of cable.

*Refer to curve for pump performance >*



**Read the pump instruction manual supplied with the pump.**



**Read the pump instruction manual supplied with the pump.**



Drg# 45L-S01

Scale: 1:5

**45L septic tank  
disposal unit**