

Technipump Limited

Hamilton East,
ph 021-114-8676
www.technipump.co.nz
email: technipumpnz@gmail.com



140Litre pit-box sump unit, Installation Instructions

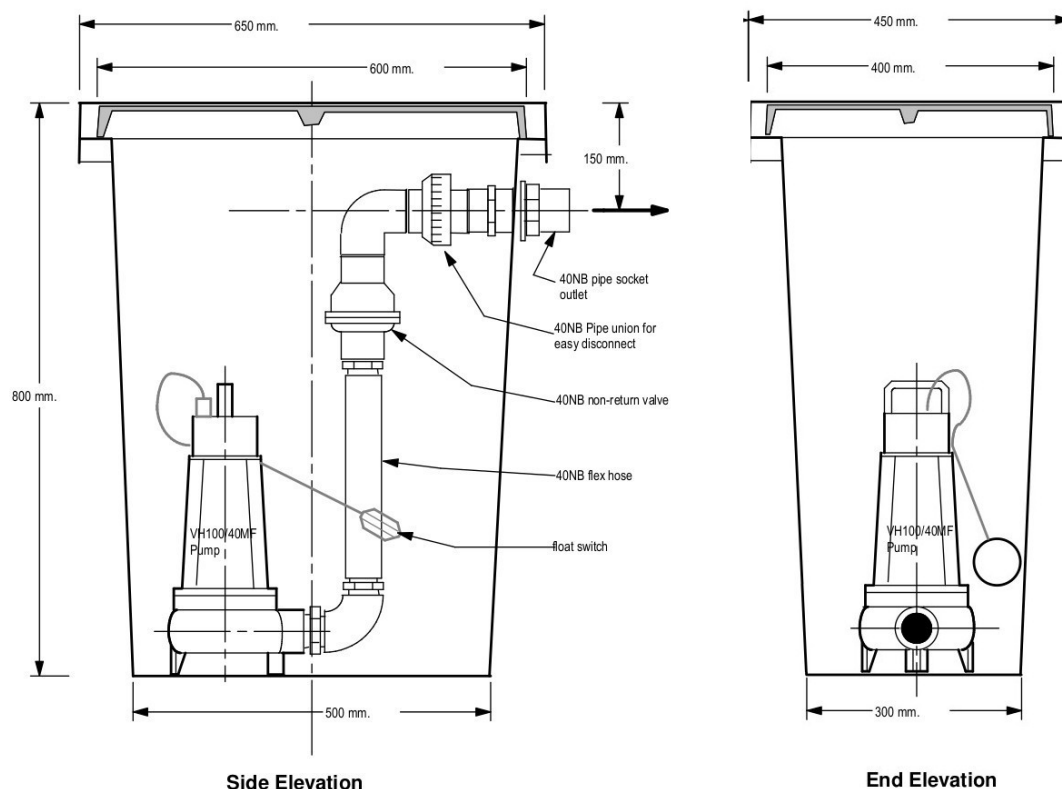
Thank you for purchasing a Technipump Dual 140L tank and pump unit. These units are designed for the pumping of storm water and waste water.

Unpacking

Remove the lid of the tank as the pump is packed in a carton within the 140L plastic tank with cardboard packers, which need to be removed.

Remove all packaging. When unpacking please check for possible damage caused in transit.

General dimensions



Connections

The outlet is a 38mm PVC pressure pipe socket, normally located on the opposite side to the inlet connection. If requested at time of ordering it can be located in other positions.

Inlet to the pit boxes is storm water in-flow via the grate at the top of the pit box, and/or from drainage pipes.

Assembly

The Grates are constructed from a polyester resin concrete mixture. It is very strong and is able to be walked on if the pit box is properly installed in the ground.

The tank and lid are not designed to take the weight of vehicular traffic, so do not install in driveways or vehicle parking places. If the tank is located near a vehicle park or in a position that will mean that it will be regularly walked on, we recommend surrounding the top of the tank with concrete as well.

When inserting the tank into the ground, we recommend pouring wet concrete into the hole first, and then nesting the tank into that. This is mandatory if the surrounding ground has a high water table, and for such installations we can provide lugs welded to the bottom of the tank to anchor it into the concrete, to prevent it floating out of the ground.

Connect the discharge hose and non-return valve assembly to the pump. Then lift the pump using it's handle and lower it into the bottom of the tank.

**>> Never lift the pump by the cable, as that will damage the pump.
Always lift using the handle on top of the pump.**

After the pump is placed in the bottom of the tank, connect the pipe union to the outlet fitting.

Read the pump instruction manual supplied with the pump.

Cable Installation.

Supplied loose with the tank is a 50mm DWV waste water pipe socket set. This unscrews into two halves.

The purpose of this fitting is to provide connection for a 50mm vent pipe, as in a closed tank with solid lid, there is need for venting as levels can change suddenly within the tank, such as with a sudden downpour or flood, or when the pump switches on.

The vent pipe is required also to act as a conduit for the pump power cable, as any cable installed in-ground requires installation in a conduit. A 50mm DWV pipe will pass a 3-pin plug, and this enables installation without cutting the power cable, and so this eliminates the need for an electrician.

The vent pipe connection fitting is supplied loose so that you can install it in the best position to suit site conditions for venting and for cable. To install use a holesaw to cut a hole 61 to 64mm diameter, then fit the male part within the tank inserting the threaded portion through the hole, and then screw the female part on to it outside the tank and tighten.

Tip: if you ever withdraw the pump from the tank and need to remove the cable, tie a piece of string to the plug so that you can pull it back through later.

When installing, draw excess cable out through the vent pipe as much as possible, rather than let it coil up inside the tank.

Pump

The pump fitted is a model VH100/40MF submersible drainage pump, with a 750watt, 230volt single phase electric motor, supplied with intergral on/off float switch and with 8m of electric cable with 3-pin plug.

The float switch cable is held by a clip on the side of the pump. Free cable lenght can be adjusted to allow higher or lower on/off settings.

Read the pump instruction manual supplied with the pump.

